

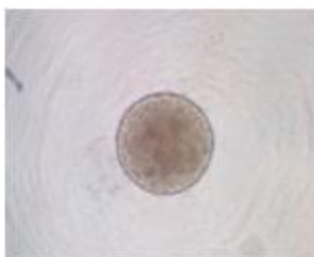
New Plates for Regenerative Medicine Research

PrimeSurface Cell Culture Plate & Dish

Your best choice for the spheroid formation of ES/iPS cells
and the drug screening using 3D cell model

SUMILON[®]'s unique low adsorption surface treatment technology is used for the PrimeSurface series products.

U-type bottom (MS-9096U)



No cell adsorption was observed on the material and the uniform cell aggregate was formed.

【Culture condition】

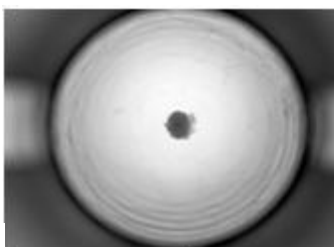
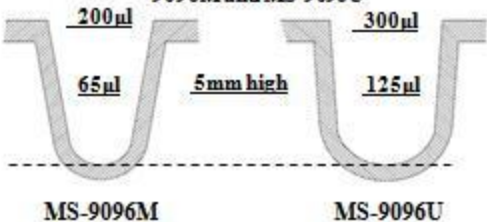
- ◆ Cell: Mouse ES cell
- ◆ Medium: DMEM+4.5mg/mL Glc.
- ◆ Seeding number: 750cells/well
- ◆ Additives: 15% Inactivated FCS
2mM L-glutamine
1% non-essential amino acid
110μM 2-mercaptoethanol
- ◆ Culture days: 3 days

V-type bottom (MS-9096M)

■ Suitable for the formation of human ES cell aggregate

■ Reduction of culture medium

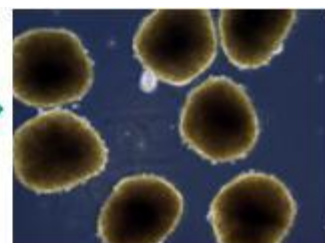
Comparison of well shape and well volume of MS-9096M and MS-9096U



x2



Collected from 7 wells



x10

Cell: hES(KhES-1 strain), 9000 cells/well
Medium: GMEM+KSR+NEAA+2ME+ 20uM Y-27632.
Observation by an invert microscopy after 6 days culture

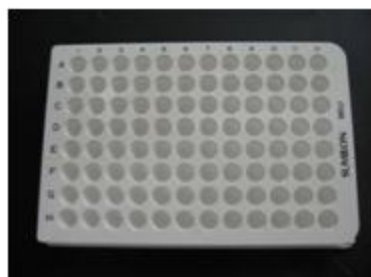
Supplied by Dr. Y. Sasai, Group Director, RIKEN center for Developmental Biology

New release!!

U-type bottom, white type (MS-9096W)

Luminescence detection following cell aggregate formation can be done on the same plate.

There are no sample loss by the transfer of cell aggregate.



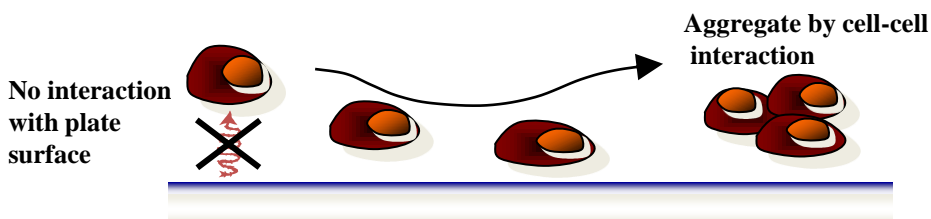
◆ SUMITOMO BAKELITE CO., LTD.

5-8, Higashi-Shinagawa 2chome, Shinagawa-Ku, Tokyo 140-0002, Japan

Tel: +81-3-5462-4831 Fax: +81-3-5462-4835 E-mail: s-bio@sumibe.co.jp URL: <http://www.sumibe.co.jp>

New Plates for Regenerative Medicine Research

PrimeSurface Cell Culture Plate & Dish



Adhesive performance of cells

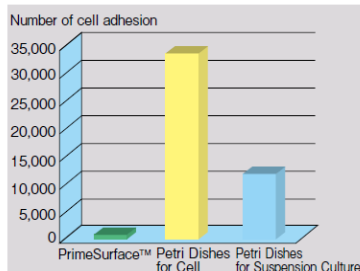
Culture condition:

Number of seeding cells: 1×10^4 cells/mL,
2 mL/dish of 35 mm ϕ

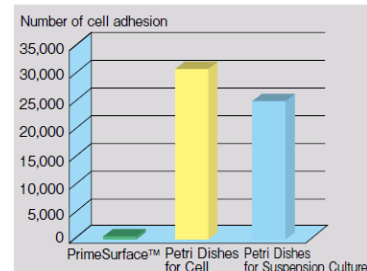
Medium: DMEM, FCS 10%

Cultured for 3 days and adherent cells were counted.

Human Hepatoma (HepG2) Cell culture



Mouse Macrophages(J774A.1) Cell Culture



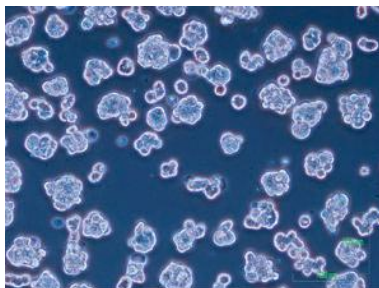
Result of HepG2 cell culture

Culture condition:

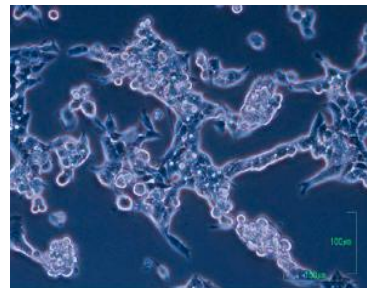
Seeding cell number: 1×10^4 cells/ml
2 ml/35mm ϕ dish

Medium: DMEM, FBS10%

Cultured for 3 days



PrimeSurface
No cell adhesion was observed.
The fully suspended cells formed natural cell aggregates by the interaction between cells.



Conventional polystyrene petri-dish
Cells adhered on the plate and started the morphological changes.

| Cat. No | Product | Description | Growth Area | Volume | Qty/Pk | Qty/Cs |
|-----------|-----------------------------|--|--------------------|--------|--------|--------|
| MS-9096UZ | PrimeSurface 96U | 96wells, U-shaped bottom | — | 0.3 mL | 1 | 20 |
| MS-9096MZ | PrimeSurface 96M | 96wells, spindle-shaped bottom | — | 0.2 ml | 1 | 20 |
| MS-9096VZ | PrimeSurface 96V | 96wells, V-shaped bottom | — | 0.3 mL | 1 | 20 |
| MS-9096WZ | PrimeSurface 96W | 96wells, U-shaped bottom, white colored | — | 0.3 mL | 1 | 20 |
| MS-9384UZ | PrimeSurface 384U | 384wells, U-shaped bottom | — | 0.1 mL | 1 | 20 |
| MS-9384WZ | PrimeSurface 384W | 384wells, U-shaped bottom, white colored | — | 0.1 mL | 1 | 20 |
| MS-9035XZ | PrimeSurface Dish 35 ϕ | 35 ϕ X 14 (H) mm | 9cm ² | — | 5 | 50 |
| MS-9060XZ | PrimeSurface Dish 35 ϕ | 35 ϕ X 14 (H) mm | 21cm ² | — | 10 | 100 |
| MS-9090XZ | PrimeSurface Dish 35 ϕ | 35 ϕ X 14 (H) mm | 57cm ² | — | 10 | 50 |
| MS-9024XZ | PrimeSurface Plate 24F | 24wells, Flat bottom | 1.8cm ² | 3.4 mL | 1 | 10 |

✦ SUMITOMO BAKELITE CO., LTD.

5-8, Higashi-Shinagawa 2chome, Shinagawa-Ku, Tokyo 140-0002, Japan

Tel: +81-3-5462-4831 Fax: +81-3-5462-4835 E-mail: s-bio@sumibe.co.jp URL: <http://www.sumibe.co.jp>