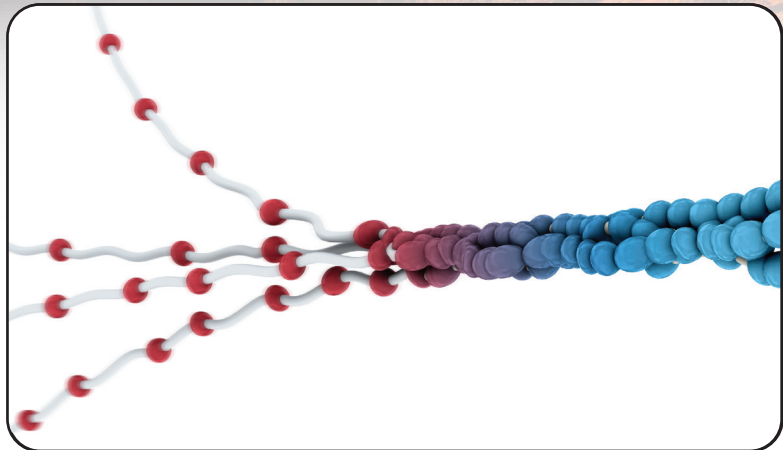


Echelon Biosciences

Hyaluronic Acid



While once thought of as a passive scaffold for cells, there is a rapidly growing appreciation for the extracellular matrix (ECM) as a physiologically active space. Chief among ECM components is **Hyaluronic Acid (HA)** which participates in cell adhesion and cell-to-cell communication and has been implicated in the development of cancer and cardiovascular disease.

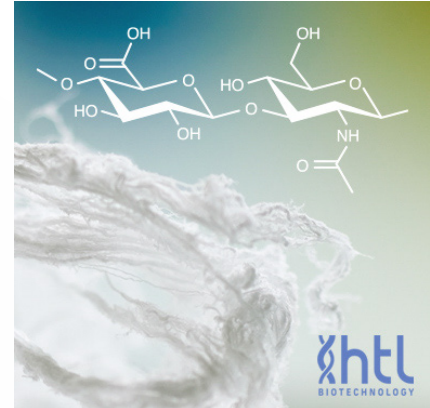
Echelon Biosciences has developed a number of tools to interrogate HA function, including ELISAs, fluorescent conjugates, and medical grade reagents.

Sodium Hyaluronate, Medical Grade

Cat # H-xxxx

Echelon Biosciences has partnered with HTL Biotechnology to bring medical grade HA to the research market.

Our sodium hyaluronate is non-animal origin, with low impurity contents, batch-to-batch reproducibility, low polydispersity. It is sourced from commercial scale material and is delivered in a fiber physical form, which is easier to handle and dissolve than HA in powder form.

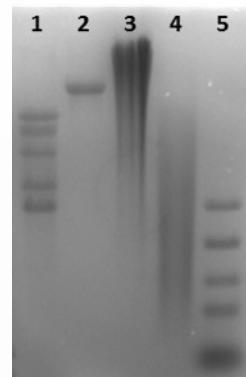


Select-HA Standards

Cat # HYA-xxxx

Echelon Biosciences is now the sole manufacturer and distributor for Select-HA™ products developed by Hyalose, LLC.

Unlike other commercial hyaluronic acid (HA), which have much greater size heterogeneity, each Select-HA™ runs as a tight band with discrete size. With low endotoxin level, individual Select-HA™ reagents are also suitable for cell culture experiments!



Select-HA™ (lane 2) and Select-HA Ladder™ (lane 1 & 5) shows tight bands in agarose gel while other commercial HA (lane 3 & 4) have much greater size heterogeneity and run as a smear.

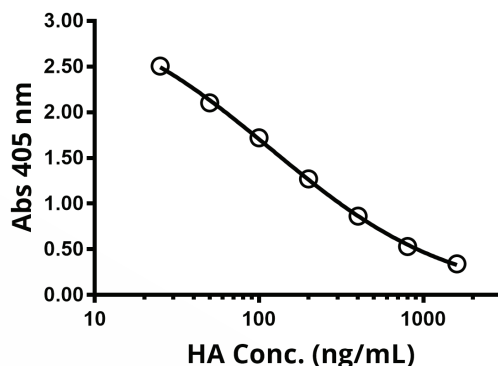
Competitive HA ELISA

Cat # K-1200

Echelon Biosciences offers Hyaluronic Acid (HA) ELISAs in two different formats. The **Competitive HA ELISA** is designed for the detection and measurement of HA from biological fluids including blood, serum, and urine.

The simple protocol requires less than three hours to complete and is independent of the molecular weight of HA species. The assay is sensitive to HA polymers of 25 units and larger.

HA Competitive ELISA Standard Curve



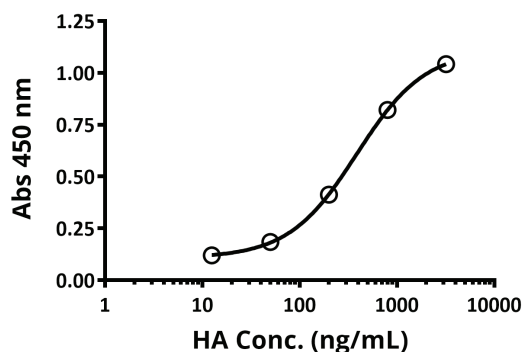
Sandwich HA ELISA

Cat # K-4800

Echelon's HA Sandwich ELISA is a quantitative immunoassay designed for measurement of HA levels in cell culture supernatant, or human/animal biological fluids.

Only a small amount of sample (25 μ L) is needed for running duplicates measurements. Echelon's HA Sandwich ELISA provides a robust and simple method for researchers to measure HA in biological samples.

HA Sandwich ELISA Standard Curve



ECM Products from Echelon Biosciences

Products	Catalog Number
Synthetic HA Reagents	
Fluorescent HA30	H-025F, H-025R
Fluorescent HA300	H-250F, H-250R
Fluorescent HA850	H-700F, H-700R
HA Standard	K-1202
Auxillary HA Reagents	
PNPP Substrate Solution & PNPP Substrate	K-1208T

Products	Catalog Number
Kits and Services	
Competitive HA ELISA	K-1200
Sandwich HA ELISA	K-4800
HA Screening Service	T-1200
HA Binding Proteins	
Versican G1 Domain (VG1)	G-HA01
Biotinylated VG1	G-HA02
His-tagged VG1	G-HA03

