

SUMMARY

shipped at RT

For research use only

Absorption / emission max.:

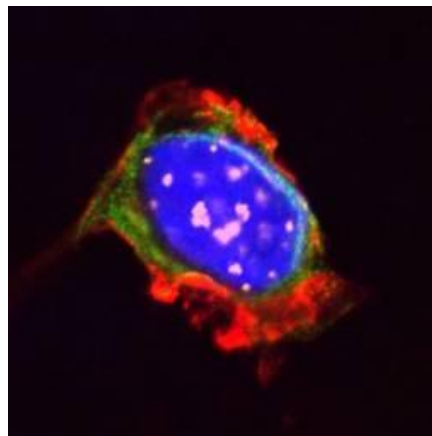
635 nm / 658 nm(in Ethanol)

Molar absorbance:

200.000 M⁻¹cm⁻¹

Comments:

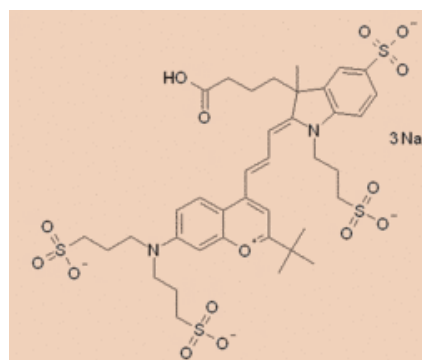
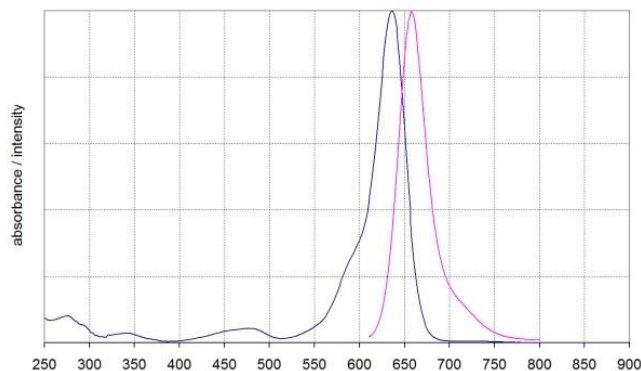
- Soluble in water, methanol, DMF, DMSO
- Latest development on benzopyrylium based dyes
- Three negative charges
- Highly enhanced water solubility and polarity



Available Modifications

Available Modifications	Molecular Weight (g • mol ⁻¹)	Molecular formula
Carboxylic acid	969.03	C ₃₈ H ₄₇ N ₂ O ₁₅ S ₄ Na ₃
NHS-ester	1066.10	C ₄₂ H ₅₀ N ₃ O ₁₇ S ₄ Na ₃
Amino-derivative	989.12	C ₄₀ H ₅₄ N ₄ O ₁₄ S ₄ Na ₂
Maleimide	1091.16	C ₄₄ H ₅₃ N ₄ O ₁₆ S ₄ Na ₃
dUTP	1562.98	C ₅₆ H ₇₂ N ₆ O ₂₉ P ₃ S ₄ Li ₇

Diagram, Formel



Literature

Turunen S., Kapyl E., Terzaki K., Viitanen J., Fotakis C., Kellomaki M., Farsari M., *Pico- and femtosecond laser-induced crosslinking of protein microstructures: evaluation of processability and bioactivity*, Biofabrication 3(2011) 045002.

Order Information, Shipping and Storage

Order#	Product	Quantity
MFP-D634-00-1	MFP™-DY-634-Carboxylic Acid	1 mg
shipped at RT; store at RT		
MFP-D634-01-1	MFP™-DY-634-NHS-Ester	1 mg
shipped at RT; store at 4 °C		
MFP-D634-02	MFP™-DY-634-Amino function	1 mg
MFP-D634-03-2	MFP™-DY-634-Maleimide	1 mg
shipped at RT; store at RT		
MFP-D634-04	MFP™-DY-634-Hydrazide	1 mg
MFP-D634-06	MFP™-DY-634-TFP-Ester	1 mg
shipped at RT; store at 4 °C		
MFP-D634-30-1	MFP™-DY-634-Biotin	500 µg
shipped at RT; store at RT		
MFP-D634-33	MFP™-DY-634-Phalloidin	300 units
shipped at RT; store at 4 °C		
MFP-D634-34	MFP™-DY-634-dUTP	100 nmol
shipped on blue ice; store at -20 °C		

2

Contact and Support

MoBiTec GmbH ● Lotzestrasse 22a ● D-37083 Goettingen ● Germany

Customer Service – General inquiries & orders

phone: +49 (0)551 707 22 0
fax: +49 (0)551 707 22 22
e-mail: order@mobitec.com

Technical Service – Product information

phone: +49 (0)551 707 22 70
fax: +49 (0)551 707 22 77
e-mail: info@mobitec.com

MoBiTec in your area: Find your local distributor at www.mobitec.com