

SUMMARY

shipped at RT;

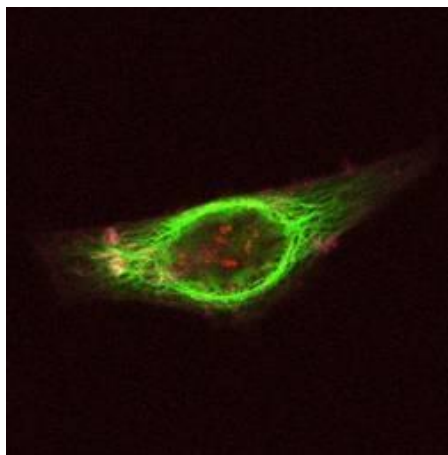
For research use only

Absorption / emission max.:
653 nm / 674 nm(in Ethanol)

Molar absorbance:
220.000 M⁻¹cm⁻¹

Comments:

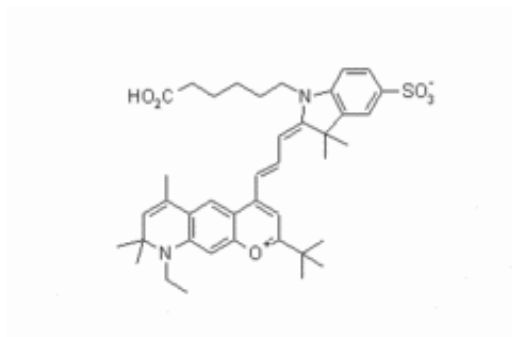
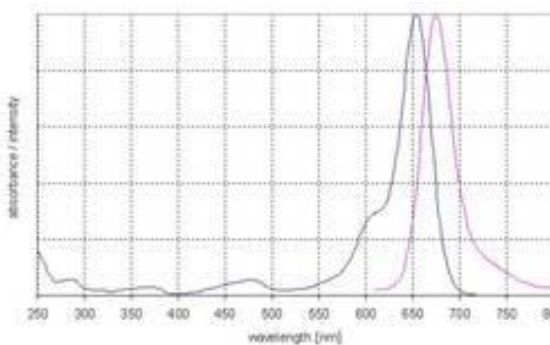
- Soluble in methanol, ethanol, DMF, DMSO
- Bright solid state emission
- Suitable for microarray experiments, Fish microscopy, gel electrophoresis
- Betanic dye



Available Modifications

Available Modifications	Molecular Weight (g • mol ⁻¹)	Molecular formula
Carboxylic acid	686.92	C ₄₀ H ₅₀ N ₂ O ₆ S
NHS-ester	783.99	C ₄₄ H ₅₃ N ₃ O ₈ S
Amino-derivative	765.46	C ₄₂ H ₅₇ N ₄ O ₅ SCI
Maleimide	809.05	C ₄₆ H ₅₆ N ₄ O ₇ S
dUTP	1215.86	C ₅₂ H ₆₄ N ₅ O ₁₉ P ₃ SLi ₄

Diagram, Formel



Order Information, Shipping and Storage

Order#	Product	Quantity
MFP-D650-00-1	MFP™-DY-650-Carboxylic Acid	1 mg
shipped at RT; store at RT		
MFP-D650-01-1	MFP™-DY-650-NHS-Ester	1 mg
shipped at RT; store at 4 °C		
MFP-D650-02	MFP™-DY-650-Amino function	1 mg
MFP-D650-03-2	MFP™-DY-650-Maleimide	1 mg
shipped at RT; store at RT		
MFP-D650-30-2	MFP™-DY-650-Biotin	1 mg
shipped at RT; store at RT		
MFP-D650-34	MFP™-DY-650-dUTP	100 nmol
shipped on blue ice; store at -20 °C		

Contact and Support

MoBiTec GmbH ● Lotzestrasse 22a ● D-37083 Goettingen ● Germany

Customer Service – General inquiries & orders

phone: +49 (0)551 707 22 0
fax: +49 (0)551 707 22 22
e-mail: order@mobitec.com

Technical Service – Product information

phone: +49 (0)551 707 22 70
fax: +49 (0)551 707 22 77
e-mail: info@mobitec.com

MoBiTec in your area: Find your local distributor at www.mobitec.com