

### SUMMARY

shipped at RT

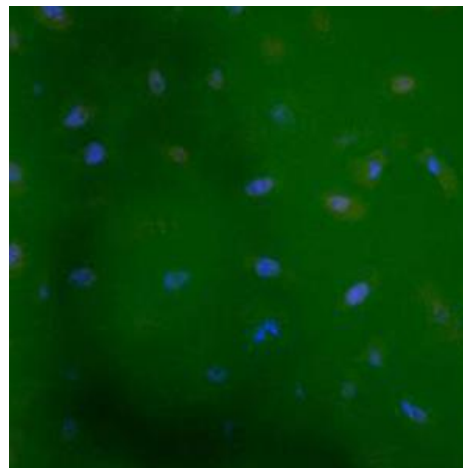
For research use only

**Absorption / emission max.:**  
705 nm / 721 nm (in Ethanol)

**Molar absorbance:**  
140.000 M<sup>-1</sup>cm<sup>-1</sup>

### Comments:

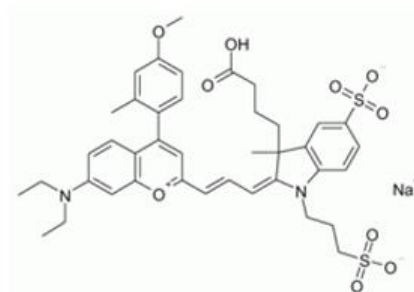
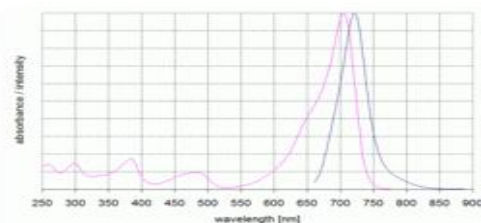
- Soluble in water, methanol, ethanol, DMF, DMSO



### Available Modifications

Available Modifications	Molecular Weight (g • mol <sup>-1</sup> )	Molecular formula
Carboxylic acid	800.93	C <sub>40</sub> H <sub>45</sub> N <sub>2</sub> O <sub>10</sub> S <sub>2</sub> * Na
NHS-ester	898.00	C <sub>44</sub> H <sub>48</sub> N <sub>3</sub> O <sub>12</sub> S <sub>2</sub> * Na
Amino-derivative	821.03	C <sub>42</sub> H <sub>52</sub> N <sub>4</sub> O <sub>9</sub> S <sub>2</sub>
Maleimide	923.06	C <sub>46</sub> H <sub>51</sub> N <sub>4</sub> O <sub>11</sub> S <sub>2</sub> * Na

### Diagram, Formel



## Order Information, Shipping and Storage

Order#	Product	Quantity
MFP-D703-00	MFP™-DY-703-Carboxylic Acid	1 mg
shipped at RT; store at RT		
MFP-D703-01	MFP™-DY-703-NHS-Ester	1 mg
shipped at RT; store at 4 °C		
MFP-D703-02	MFP™-DY-703-Amino function	1 mg
shipped at RT; store at RT		
MFP-D703-34	MFP™-DY-703-dUTP	1 mg
shipped on blue ice; store at -20 °C		

## Contact and Support

MoBiTec GmbH ● Lotzestrasse 22a ● D-37083 Goettingen ● Germany

### Customer Service – General inquiries & orders

phone: +49 (0)551 707 22 0  
fax: +49 (0)551 707 22 22  
e-mail: [order@mobitec.com](mailto:order@mobitec.com)

### Technical Service – Product information

phone: +49 (0)551 707 22 70  
fax: +49 (0)551 707 22 77  
e-mail: [info@mobitec.com](mailto:info@mobitec.com)

**MoBiTec in your area:** Find your local distributor at [www.mobitec.com](http://www.mobitec.com)