



## ProFoldin

10 Technology Drive, Suite 40, Number 188  
Hudson, MA 01749-2791 USA  
Tel: (508) 735-2539 FAX: (508) 845-9258  
[www.profoldin.com](http://www.profoldin.com)  
[info@profoldin.com](mailto:info@profoldin.com)

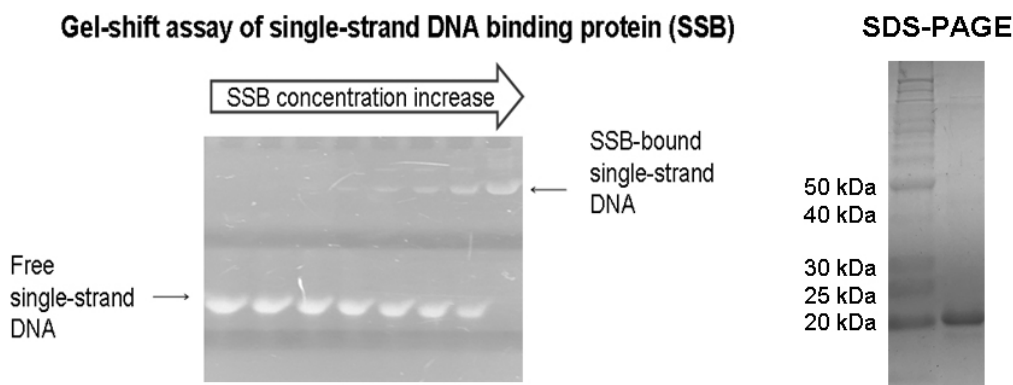
## INSTRUCTIONS

# ProFoldin *E. coli* Single-Strand DNA Binding Protein

---

### Catalog No. SSB-100EC

- Protein construct: Wild-type *E. coli* single-strand DNA binding protein with a His-tag on its N-terminus expressed from a bacterial expression system and purified by column chromatography.
- MW: 20.7 kDa
- Enzyme concentration: 2 mg /ml
- Enzyme activity assay: The Gel Shift Single-strand DNA Binding Assay kit (GSSB100KE) is used to measure the DNA binding activity.
- Storage temperature: -20 or -80°C. Do not freeze-and-thaw repeatedly.
- Enzyme dilution: Use 10 mM Tris-HCl buffer.



The *E. coli* Single-Strand DNA Binding Protein (Catalog No. SSB-100EC) includes 50  $\mu$ l of 2 mg/ml *E. coli* single-strand DNA binding protein in a buffer composed of 10 mM Tris-HCl, pH 7.5, 20 % glycerol.

### Related Products:

Gel Shift Single-strand DNA Binding Assay kit	GSSB100KE
Human Topoisomerase I, 10,000 Units	HTOPI-010
Relaxed plasmid DNA - 0.050 mg	RDNA-050UG
Supercoiled plasmid DNA - 0.050 mg	SDNA-050UG

For more information of drug targets and protein products, please visit [www.profoldin.com](http://www.profoldin.com) or send emails to [info@profoldin.com](mailto:info@profoldin.com).