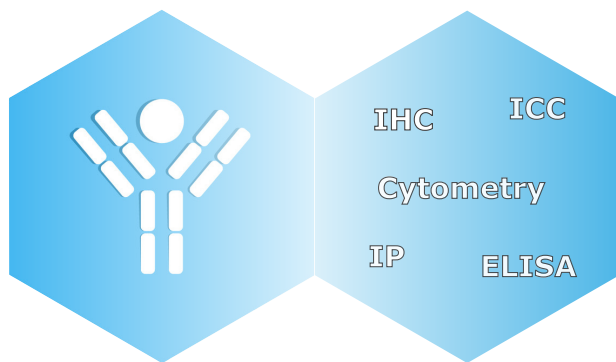


What can you do with our antibodies?



There is a growing appreciation and awareness of lipids as more than just static membrane components. Lipids have emerged as complex players in cellular signaling, membrane trafficking, and are increasingly investigated as potential therapeutic targets. This swell of interest in lipid biology requires appropriate tools for visualizing and understanding their function

Echelon Biosciences carries an array of lipid antibodies that have been validated in a range of applications including ICC and IHC.

Mouse Anti-PI(4)P Antibody

Cat # Z-P004

- Mouse monoclonal antibody to PI(4)P
- IgM, clone PI42
- Little to no cross-reactivity with other phospholipids
- Multiple uses including **ICC** and **ELISA**

Data: Immunofluorescence

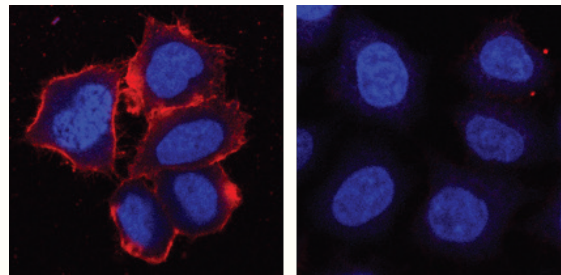


Image adapted with permission, Gerald Hammond.
Confocal images of anti-PI(4)P stained cells (left) or cells pre-incubated with PI(4)P prior to staining (right). DAPI counterstain.

Mouse Anti-PI(4,5)P2 Antibody

Cat # Z-P045

- Mouse monoclonal antibody to PI(4,5)P2
- IgM, clone 2C11
- No observed cross-reactivity
- Validated for **immunofluorescence** and **ICC**

Data: Immunofluorescence

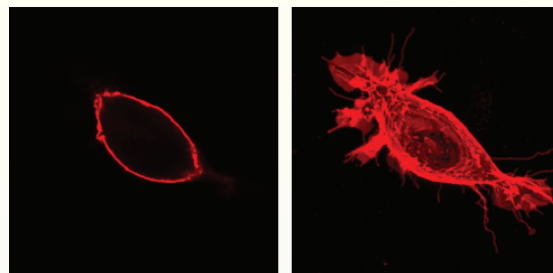


Image adapted with permission, Gerald Hammond.
Left: 2D confocal plane, Right: 3D confocal stack

Also available: **Biotinylated Anti-PI(4,5)P2**, Cat # Z-B045

Mouse Anti-PI(3,4,5)P3 Antibody

Cat # Z-P345

- Mouse monoclonal antibody to PI(4)P
- IgM isotype
- Little to no cross-reactivity observed in cells
- Validated for **immunofluorescence**, **ICC**, and **ELISA**

Also available: **Anti-PI(3,4,5)P3 IgG**, Cat # Z-B045

Data: Immunofluorescence

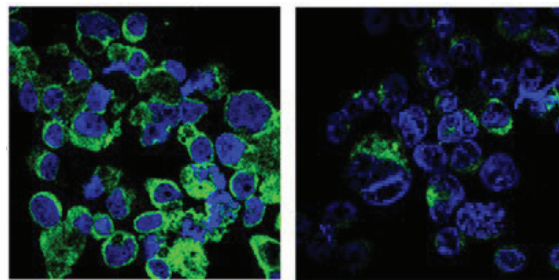


Image adapted with permission, Chen et al.
IF of PI(3,4,5)P3 in gastric cancer cells.

Exclusive LPA and S1P Antibodies

Introducing the latest additions to Echelon's lipid antibody catalog:

Z-P200 - Lysophosphatidic Acid (LPA) Antibody

Z-P300 - Sphingosine 1-Phosphate (S1P) Antibody

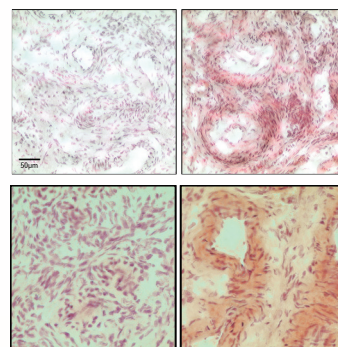
Z-P200 and Z-P300 were originally developed at Lpath Therapeutics and have been further validated for in vitro use by Echelon Biosciences.

Visit echelon-inc.com for our full suite of antibodies.

Data: Immunohistochemistry

Lysophosphatidic Acid (LPA) is a serum-derived phospholipid involved in diverse cellular processes such as cell proliferation, chemotaxis, and tumor invasion. Recent research indicates LPA may play a significant role in the

Sphingosine 1-Phosphate (S1P) is a key component of the sphingolipid signaling cascade. Recent literature suggests that S1P is a potent tumorigenic growth factor released from tumor cells and that S1P may be a novel biomarker for early



LPA Antibody

S1P Antibody

Control

Stained

PIP Antibodies and Control Proteins

Products	Catalog Number
PIP Antibodies	
Purified Anti-PtdIns(3)P IgM	Z-P003
Purified Anti-PtdIns(4)P IgM	Z-P004
Purified Anti-PtdIns(3,4)P2 IgM	Z-P034
Purified Anti-PtdIns(4,5)P2 IgM	Z-P045
Purified Anti-PtdIns(3,4,5)P3 IgG	Z-P345b
PIP Binding Proteins	
PI(3)P Grip	G-0302
PI(4)P Grip	G-0402
PI(4,5)P2 Grip	G-4501
PI(3,4,5)P ₃ Grip	G-3901
MultiPIP Grip	G-9901

Other products that may interest you

Products	Catalog Number
PIP Mass Assays	
PIP3 Mass ELISA	K-2500s
PI(3)P, Mass ELISA	K-3300
PI(4)P Mass ELISA	K-4000E
PI(3,4)P2 Mass ELISA	K-3800
PI(4,5)P2 Mass ELISA	K-4500
Enzymes and Activity Assays	
PI3-Kinases, WT or Mutant	E-2000, P28-10H
SHIP2 Enzyme	E-1000
PTEN Enzyme	E-3000
Phosphatase Activity FP Kit	K-1400
PTEN Activity Kit	K-4700
PI3-Kinase Activity ELISA	K-1000s

