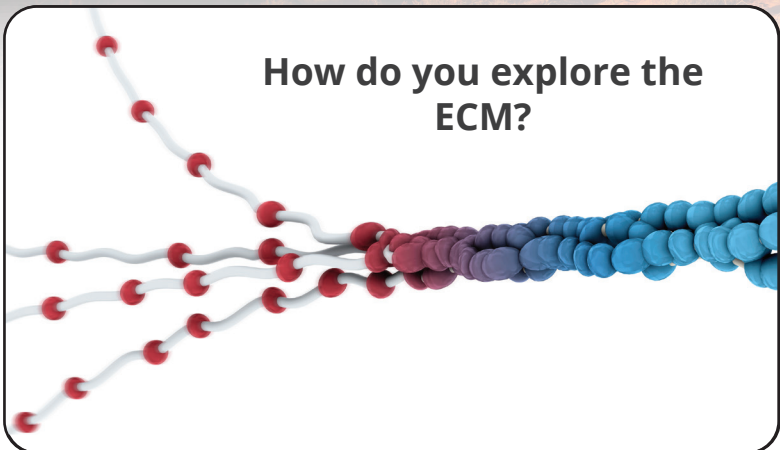


## How do you explore the ECM?



While once thought of as a passive scaffold for cells, there is a rapidly growing appreciation for the extracellular matrix (ECM) as a physiologically active space. The ECM is now known to participate in cell adhesion and cell-to-cell communication and has been implicated in the development of cancer and cardiovascular disease.

**Echelon Biosciences** has developed a number of tools to interrogate the function of ECM components, including ELISAs and fluorescently conjugated ECM components.

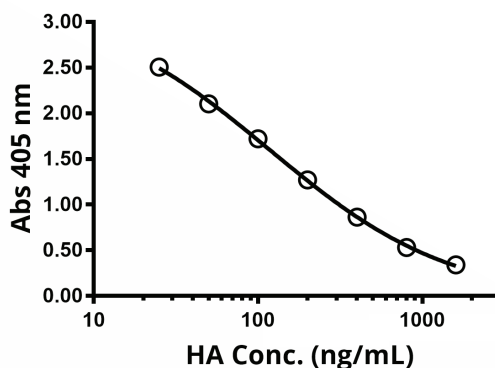
## Competitive HA ELISA

Cat # K-1200

Echelon Biosciences offers Hyaluronic Acid (HA) ELISAs in two different formats. The **Competitive HA ELISA** is designed for the detection and measurement of HA from biological fluids including blood, serum, and urine.

The simple protocol requires less than three hours to complete and is independent of the molecular weight of HA species. The assay is sensitive to HA polymers of 25 units and larger.

### HA Competitive ELISA Standard Curve

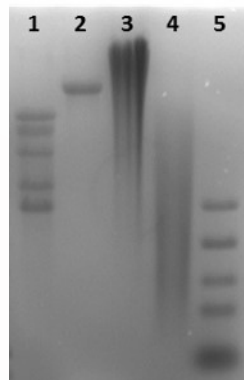


## Select-HA Standards

Cat # HYA-xxxx

Echelon Biosciences is now the sole authorized distributor for Select-HA™ products from Hyalose, LLC.

Unlike other commercial hyaluronic acid (HA), which have much greater size heterogeneity, each Select-HA™ runs as a tight band with discrete size. With low endotoxin level, individual Select-HA™ reagents are also suitable for cell culture experiments!



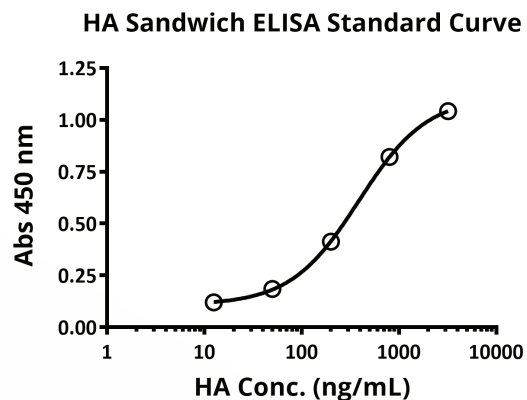
Select-HA™ (lane 2) and Select-HA Ladder™ (lane 1 & 5) shows tight bands in agarose gel while other commercial HA (lane 3 & 4) have much greater size heterogeneity and run as a smear.

# Sandwich HA ELISA

Cat # K-4800

Echelon's HA Sandwich ELISA is a quantitative immunoassay designed for measurement of HA levels in cell culture supernatant, or human/animal biological fluids.

Only a small amount of sample (25  $\mu$ L) is needed for running duplicates measurements. Echelon's HA Sandwich ELISA provides a robust and simple method for researchers to measure HA in biological samples.

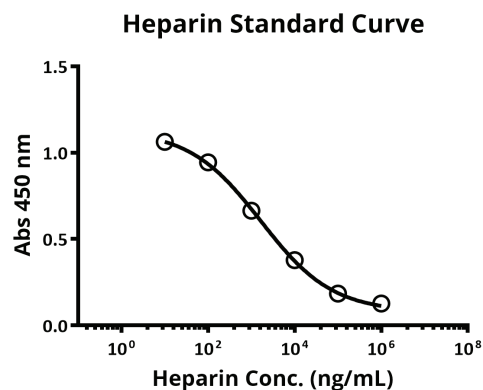


# Heparin ELISA

Cat # K-5300

Contamination in injectable heparin was discovered in 2008 and resulted in a major recall of related medical products. Therefore, ensuring purity of raw heparin is critical in medical heparin manufacturing.

Echelon's Heparin ELISA offers a competitive assay format for the detection of purified or synthetic heparin. The assay provides a quick and easy platform for assessing the quantity and quality of heparin samples.



## ECM Products from Echelon Biosciences

Products	Catalog Number
<b>Synthetic HA Reagents</b>	
Fluorescent HA30	H-025F, H-025R
Fluorescent HA300	H-250F, H-250R
Fluorescent HA850	H-700F, H-700R
HA Standard	K-1202
<b>Auxillary HA Reagents</b>	
PNPP Substrate Solution & PNPP Substrate	K-1208T

Products	Catalog Number
<b>Kits and Services</b>	
Competitive HA ELISA	K-1200
Sandwich HA ELISA	K-4800
Heparin ELISA	K-5300
HA Screening Service	T-1200
<b>HA Binding Proteins</b>	
Versican G1 Domain (VG1)	G-HA01
Biotinylated VG1	G-HA02

